



PARTS OF THE PRODUCT



YOU WILL NEED...



Clean cloth



Masking tape



Cutter or scissors



Spatula or plastic card

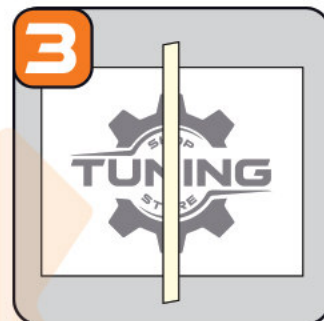
HOW TO APPLY VYNIL DECAL



Clean with a cloth and water the surface on which the vinyl decal will be applied.



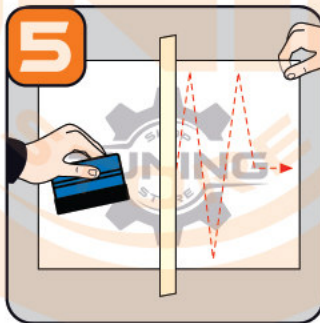
Resting the product on a flat surface, rub the spatula to make the application tape adhere better to the sticker.



Place the product on the surface on which it will be applied and in the center, vertically, apply the masking tape.



Detach the application tape (sticker will remain attached to the application tape) and cut the part of the underlying support.



Starting from the center, spatulate outwards, making the sticker adhere to the surface. Remove the masking tape and repeat steps 4 and 5.



Starting from one corner, remove the application tape making sure that the sticker has fully adhered to the surface.